

A GUILD IS BORN

PACIFIC PIECEMAKERS QUILT GUILD

MARCH 1996

We have a name ...

Pacific Piecemakers
Quilt Guild



We have a date ...

March 29, 1996

We have a place ...

Gualala Arts Center

We have a time ...

11a.m.- 12:30 p.m.

Please join us for the first organizational meeting of Pacific Piecemakers Quilt Guild, California's newest artisan's guild. Our purpose will be to have FUN! while educating quilters in all aspects of quilting and to bring quilting to the community.

Membership is open to quilters and anyone interested in quilts. Once per month meetings will feature lectures and demonstrations. The guild will sponsor workshops, field trips, show and tell, block swaps, block of the month, and special interest groups. The excitement begins Friday, March 29, 11 a.m. We look forward to welcoming you.



Questions? call Anita Kaplan 785-3601 or Gayle Stewart 884-1218

Supported by Gualala Arts

JULY 1996 NEWSLETTER

- “The Pacific Piecemakers Quilt Guild Banner is finally finished and ready to be embroidered with the names of the charter members of the Guild. If you joined the Guild by the end of May you earned the privilege of putting your name on the back for posterity.
- You may use any color of embroidery floss (two strands only) and any style lettering. Each name should be less than 1 inch high and as long as you need. Putting the names at different angles will make a pleasant design.
- The Guild banner will be available for signatures at the July Sew-In and for overnights after that. If each person keeps it only one night it will still take quite a while to finish it. We look forward to hanging it at Art-In-The-Redwoods and at all our events from now on.”

PPQG BANNER



CHARTER MEMBERS (43)

- Elaine Anderson
- Mary Austin
- Lucille Bacon
- Laura Barry
- Annie Beckett
- Judy Bligh
- Doris Buck
- Edith Carman
- Linda Cotton
- Dianne Cunningham
- Polly Dakin *
- Jo Dillon *
- Pat Ditzler
- Nettie Eldred
- Katy Horn
- Janet Hubbard
- Elizabeth Jacobs
- Anita Kaplan
- Theresa Kohlmeister
- Dena Kye
- Sue Lease
- Judith Leeper
- Leanne Liston
- Barbara McNulty
- Claire McPherson
- Karel Metcalf
- Dorothy Moore
- Paula Osborne *
- Norma Perryman
- Dot Porter
- Janet Sears *
- Jane Shields
- Bev Sloane
- Zoe Smith
- Janet Snook
- Lenore Sollom *
- Kathryn B. Stainfield
- Gayle Stewart *
- Mary Suhr
- Marge Tarp
- Virginia Trautman
- Betty Tresidder
- Pamela Wilson
- *Guild Presidents

ACCOMPLISHMENTS THE FIRST YEAR

- Banner
- The Bee Hive
- Fanny Basket
- Holiday Dinner (December 1996)
- Joined NCQC (Northern California Quilt Conference)
- July Picnic (Sew-in)
- Library
- Logo
- Name Tag
- Newsletter
- Program of Lecturers and Workshops
- Quilt Challenge
- Quilt Gala (fundraiser November 1996)
- Quilt Groups established

LIBRARY

- I've agreed to help organize the library for the guild. However, this doesn't mean donating my personal quilting library (perhaps I'll change my will to do that!), but rather soliciting donations from stores and publishers. If you know of a likely donor, please take a moment to contact me by email.
- Of course, if you know of someone with relevant books they don't want, we'd be happy to receive them. I hope to make this library a valuable resource with exciting and provoking books, not a dreary dust collector.
- Janet Hubbard
- First Librarian

CURRENT LIBRARY HOLDINGS.....

• 525 items

- Thanks to Mirka Knaster current update on 2/5/2014

NAMETAG

- Save your tiny scraps...the smallest challenge is underway. Each member of Pacific Piecemakers is invited to create a personal nametag 3x5 or larger.
- At the April (1996) meeting you will receive a small block stamped with the guild's name. Your challenge will be to create a personal statement that incorporates the guild block and your own name as well as some quilting.
- Hang it on a ribbon or string to wear around your neck to each guild meeting and you're automatically entered to win a monthly raffle

THE BEE HIVE

- This column of the Newsletter is reserved for the tidbits gleaned at weekly quilting bees or around town. We'd like to know who of our members has a new grandchild or a wedding in the family, who is returning after an illness or a great trip

FANNY BASKET

- Pamela Wilson and Betty Tressider are bringing us the Fanny Basket. This is an activity born out of a need to share and a need to occasionally clean out one's stash. The basket will appear for the first time at the June (1996) meeting and will already be endowed with the extras from Pamela's and Betty's fabric closets. Bring a fabric you no longer want to the June meeting. The idea is to deposit fabric (1/4 yard or larger, no scraps) in the basket and when you are in need of a "piece of something" for a project you may help yourself. One person's cast-offs may be someone else's gems. The give and take is strictly on the honor system and may be accomplished at different meetings.
- Rumor has it that the Fanny Basket got its name from the view of the basket as it sat on the floor surrounded by quilters bent over it.

PACIFIC PIECEMAKERS QUILT GUILD

Guild Presidents

MARCH 2013 TO FEBRUARY 2014 #17

• Judy Riddle

MARCH 2012 TO FEBRUARY 2013

#16

• **Polly Dakin**

MARCH 2011 TO FEBRUARY 2012

#15

- **Lola DeLongoria**

MARCH 2010 TO FEBRUARY 2011

#14

• Joyce Gaudet

MARCH 2009 TO FEBRUARY 2010

#13

• **Jan Carter**

MARCH 2008 TO FEBRUARY 2009

#12

• **Barbara Dunsmoor**

MARCH 2007 TO FEBRUARY 2008

#11

- **Marilyn Limbaugh**

MARCH 2006 TO FEBRUARY 2007

#10

• **Carol Tackett**

MARCH 2005 TO FEBRUARY 2006

#9

- **Lynn Atkins**

MARCH 2004 TO FEBRUARY 2005

#8

• Donna Blum

MARCH 2003 TO FEBRUARY 2004

#7

- **Linda Warnock**

MARCH 2001 TO FEBRUARY 2003

#6

• **Paula Osborne**

JANUARY 2001 TO FEBRUARY 2002

#5

• **Janet Sears**

JANUARY 2000 TO DECEMBER 2000

#4

• Gayle Stewart

JANUARY 1999 TO DECEMBER 1999

#3

- **Lenore Sollom**

JANUARY 1998 TO DECEMBER 1998

#2

• Jo Dillon

MARCH 1997 TO DECEMBER 1998

#1

- **Naida Mauthe**

TERMS FOR GUILD PRESIDENTS

- | | | | |
|------------------------------|------------------|--------------------------------|---------------|
| • March 2013 – February 2014 | Judy Riddle | • January 2001 – February 2002 | Janet Sears |
| • March 2012 – February 2013 | Polly Dakin | • January 2000 – December 2000 | Gayle Stewart |
| • March 2011 – February 2012 | Lola DeLongoria | • January 1999 – December 1999 | Lenore Sollom |
| • March 2010 – February 2011 | Joyce Gaudet | • January 1998 – December 1998 | Jo Dillon |
| • March 2009 – February 2010 | Jan Carter | • March 1997 – December 1998 | Naida Mauthe |
| • March 2008 – February 2009 | Barbara Dunsmoor | • March 1996 – March 1997 | Chairpersons |
| • March 2007 – February 2008 | Marilyn Limbaugh | | |
| • March 2006 – February 2007 | Carol Tackett | | |
| • March 2005 – February 2006 | Lynn Atkins | | |
| • March 2004 – February 2005 | Donna Blum | | |
| • March 2003 – February 2004 | Linda Warnock | | |
| • March 2002 – February 2003 | Paula Osborne | | |

- Art in the Redwoods (AIR) Quilts
A quilt was made for the Gualala Art Center scholarship program. Raffle tickets were sold and the winner announced at the Art in the Redwoods Festival each year from 1996 through 2013.
- Pictures of these quilts are on the Gualala Arts website for 2005 through 2013.

EARL'S QUILT 2005



RAINBOW DREAMS 2006

Designed by Lola DeLongoria

Pieced and finished by Lola
DeLongoria, Joyce Gaudet, Laura
Hamilton, Mary Alice Bastian

Quilted by Sharon Malachowski



TROPICAL SPLENDOR 2007

Designed by Lola DeLongoria

Pieced and assembled by Lola,
DeLonia,

Joyce Gaudet, Laura Hamilton and
Mary Alice Bastian

Quilted by Sharon Malachowski



AUTUMN IN MY DREAMS 2008

Created by Lola De Longoria, Carol
Tackett and Marilyn Limbaugh
Quilted by Sharon Malachowski



CHAINS OF GOLD

2009

Created by Gail Sims and Janet Windsor

Quilted by Sharon Malachowski



POCKET FULL OF POSIES

2010

Created by Gail Sims and Janet Windsor

Quilted by Sharon Malachowski



50TH ANNIVERSARY

2011

Created by Judy Castleton, Sue Arnold, Babs
Levine, Joan Rudman and Peggy Smith

Quilted by Sharon Malachowski



VINTAGE ELEGANCE

2012

Design and Applique by Judy Riddle

Background pieced by Marva Jacobs and
Marilyn Limbaugh

Quilted by Sharon Malichowski



TEQUILLA SUNRISE

2013

Created by Polly Dakin, Lola DeLongoria,
Joyce Gaudet and Laura Hamilton

Quilted by Sharon Malachowski



RETREATS

- First Retreat – January 31 – February 7, 2005 Marconi Conference Center, Marshall (east side of Tomales Bay)
- January 31 – February 1, 2006---Vichy Springs Resort & Spa, Ukiah
- January 29 – February 1, 2007 --- Vichy Springs Resort & Spa, Ukiah

- January 26 – 29, 2009--Dry Creek Inn, Healdsburg

- January 31 – February 3, 2011—Dry Creek Inn, Healdsburg

- February 2013 – Dry Creek Inn, Healdsburg
- February 6 – 9, 2014 – Dry Creek Inn, Healdsburg

JULY PICNIC

July 1996 - 2005 at Naida Mauthe's house



JULY “PICNIC” TURNED INTO JULY “OUTING”

- July 2006 - July 2010 picnic to Gualala Art Center
- July 2011 trip to Botanical Gardens in Ft Bragg
- July 2012 trip to Korbel Winery, Guernville
- July 2013 tour of B. Bryan Preserve, Point Arena

WORKSHOPS

1996 – 2013 – 53 WORKSHOPS FROM NOTABLE QUILT ARTISTS:

- Judy Mathieson
- Judy Sisneros
- Sonya Lee Barrington
- Chritine Barnes
- Angie Woolman
- Katie Pasquini
- Masopust
- Velda Newman
- Charlotte Warr Anderson
- Rosemary Eichorn
- Rami Kim
- Rosalie Dace
- Liz Berg
- Hollis Chatelain
- Terry Waldron
- Dianne Hire
- Thom Atkins
- Laura Wasilowski

JUDY MATHESON WORKSHOP

JANUARY 2001



JUDY SISNEROS WORKSHOP MARCH 2001



CHRISTINE BARNES WORKSHOP SEPTEMBER 2001



CONTINUING EDUCATION TAUGHT BY IN-HOUSE GUILD MEMBERS

- **Beginning Piecing** by Gayle Stewart in September 1998, March 2001
- **Piecing II** by Gayle Stewart in September 1999
- **Beginning Piecing** by Connie Seale, September 2002
- **Beginning Piecing** by Anita Kaplan, September 2004
- **Beginning Quilting** by Janet Sears, September 2005
- **Intermediate Quilting** by Mary Austin and Janet Sears, September 2005
- **Beginning Quilting** by Mary Austin and Janet Sears, March 2007
- **Beginning Quilting** by Mary Austin and Janet Sears, February 2008
- **Intermediate Piecing** by Janet Sears and Mary Austin, February 2009
- **Beginning Quilting** by Mary Austin, February 2010
- **Beginning Quilting** by Jan Carter and Kalyann Oleson, October 2010
- **Intermediate Quilting** by Jan Carter and Kalyann Oleson, February 2011
- **Intermediate Quilting** by Jan Carter and Kalyann Oleson, February 2012
- **Beginning Quilting** by Jan Carter and Kalyann Oleson, February 2013
- **Intermediate Quilting** by Jan Carter and Kalyann Oleson, February 2014
- **Hand Quilting** by Gayle Stewart, January 1999
- **Hand Quilting** by Barbara Dunsmoor, September 2007
- **Machine Quilting** by Anita Kaplan, July 2001
- **Beginning Machine Quilting** by Anita Kaplan, March 2004
- **Machine Quilting** by Anita Kaplan, March 2006
- **Free Motion Quilting** by Bonnie Toy, October 2008
- **Machine Quilting** by Bonnie Toy, November 2010
- **Beginning Freemotion Quilting** by Bonnie Toy, April 2011
- **Intermediate/Advanced Machine Quilting** by Bonnie Toy, November 2011
- **Hand Applique** by Judith Jones, November 2001
- **Hand Applique** by Gail Sims, February 2010
- **Machine Applique** by Carole Tackett and Marilyn Limbaugh, May 2009
- **Learn Three Out-of-the-Box Ways to Design a Quilt** by Anita Kaplan, February 2003
- **Color Value and the Triangle** by Anita Kaplan, July 2003
- **Ives Color System** by Annie Beckett, May 2004
- **Fuse it or Lose it** by Anita Kaplan, March 2004
- **No Math Drafting** by Iris Lorenz-Fife, April 2004
- **No Math Drafting and Tessalations for Quilters** by Iris Lorenz-Fife, November 2006
- **Glorious Jackets** by Kalyann Oleson, June 2008
- **Sashiko** by Mary Austin, October 2009

HOLIDAY PARTIES

- December 1996 – 2011 at Gualala Art Center
- December 2012 Holiday Party changed to luncheon January 2013 at St. Orres
- January 2014 luncheon at St. Orres

QUILT CHALLENGE

- 1997 – “Log Cabins”
- The ONLY design used in your entry must be one or more recognized log cabin designs.
- No required fabrics or colors.
- Title Unknown
- Elizabeth Jacob



QUILT CHALLENGE

- 1998 – “Quilts: Artistic Expressions
- Create an original quilt inspired by a master artist

QUILT CHALLENGE

- 1999 – “Create a Quilt Using Math”
- Use something new: tessellations, fractals, optical illusion, isometric perspective, geometry.
- Use colors you like, but don’t usually gravitate to.
- “Music of the Spheres”
- By Ellen Soule



QUILT CHALLENGE

- 2000 – “Millennium Memories, Mystery & Madness – A Celebration”
- Create a keepsake memento of the millennium in any size
- Use recognizable amount of either silver or gold fabrics, plus black in the challenge packets

QUILT CHALLENGE

- 2001 – “Beyond the Borders”
- Choose an idea for your quilt inspired by any culture outside the 50 US states –past, present or future

- “Year of the Dragon 2000”
- Jo Dillon



QUILT CHALLENGE

- 2002 – “The Nature of Things: Quilts Inspired by the Natural World”
- “inspired by” imagination, literal, abstract, cosmic
- “Erosion”
- Linda Cotton



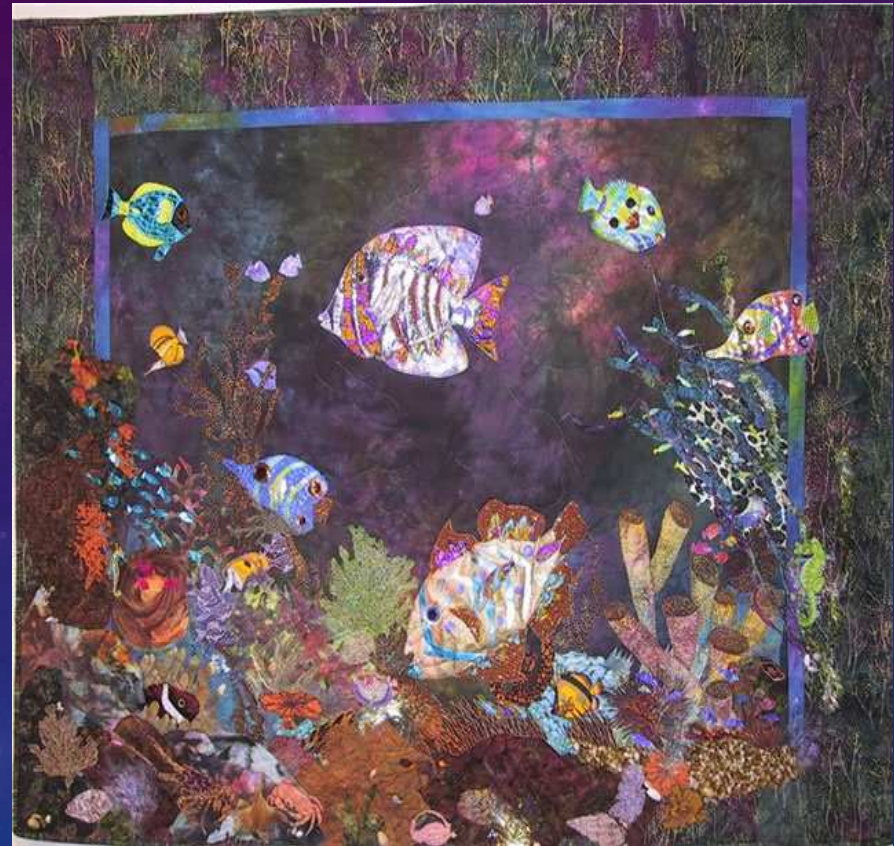
QUILT CHALLENGE

- 2003 – “It’s the Little Things”
- Find “the little things” that you want to express in your quilt, i.e. thimble made large, elephant made small.
- “A little Night Music”
- Miriam Littlejohn



QUILT CHALLENGE

- 2004 – “Something is Fishy”
- Think fish...any size, any pattern, any design, showing how you were inspired by fish.
- “Jewels of the Coral Sea”
- Carol Tackett



QUILT CHALLENGE

- 2005 – “The Quilter Revealed: Portraits and Self-Portraits
- Create a quilt which addresses the question: Who am I?
- Title Unknown
- Lynne Atkins



QUILT CHALLENGE

- 2006 – “A Perfect 10”
- Create a quilt that features “ten” somewhere in the quilt
- Pick Up Sticks
- Jan Carter



QUILT CHALLENGE

- 2007 – “Flights of Fantasy”
- Quilts created by vivid imaginations using a pre-selected fabric (orange flowered fabric)
- Title Unknown
- Janet Windsor



QUILT CHALLENGE

- 2008 – “I Found It In The Library”
- Try a new pattern, style, color scheme, or technique
- Harry Potter
- Donna Blum



QUILT CHALLENGE

- 2009 – “It’s EASY Being Green”
- Eco-minded quilts

- “Carbon Footprint”
- Barbara Dunsmoor



QUILT CHALLENGE

- 2010 – “I Love Chocolate”
- Chocolate-themed quilts using challenge fabric resembling chocolate chip cookies.
- “Nuts and Chews”
- Bonnie Toy



QUILT CHALLENGE

- 2011 – “Rhapsody in Hue”
- “Concerto for Oboe in A Minor”
- Anna Hines



QUILT CHALLENGE

- 2012 – “West Coast Splendor”
- “Sea Horse”
- Charis Webb



QUILT CHALLENGE

- 2013 – “Celebrate!”
- “Celebrating the Year of the Snake”
- Mary Smith



FUND RAISERS

- Quilt Gala November 1996
- GAC Fine Arts Fair (Memorial Day Weekend) 2009
- Art in the Redwoods 1996(?) – 2003 (8 years)
- Festival of Trees 2007 through 2013 (7 years)

ART IN THE REDWOODS BOOTH

2001



2002



THINGS THAT HAVE CHANGED

- **1996 Membership** List dated June 20 1996 showed 69 members
- Current membership as of February 2014 is 98
- **1996 - annual PPQG membership dues** were \$25
- Five years later, in 2001, dues increased to \$35
- Six years later, in 2007, dues increased to \$40
- It's now seven years later....Dues are \$40
- **Library**.....Now has 525 books
- **Newsletter**
 - initially mailed each month, then members picked up at Dolphin, then went electronic in 2001
 - Information included in the Newsletter changed somewhat
- First **Webmistress** was Reva Basch in 2001 (4 yrs)
- Bonnie Toy has been Webmistress since 2005 (9 yrs)
- **Comfort Quilts**...started titled as Quilts of Caring then changed to Comfort Quilts

THINGS THAT HAVE REMAINED CONSISTENT

- Nametag
- Day and time and location of the Guild meeting
- Library contributions and checkout
- A Program
- Comfort Quilt Workshops twice a year
- Annual Quilt Challenge
- Continuing Education
- Publicity

MILESTONES

- **June 1996** – Fanny Basket initiated
- **July 1996** – Invited to participate in Art in the Redwoods
- **November 1996** – Quilt Gala (First Fund Raiser)
- **January 1997** – Show and Tell at Guild Meetings
- **August 1999** – No more meetings in the month of August
- **June 2001** – Website Debut
- **May 2003** – PPQG Pins
- **August 2004** – Booth at Art in the Redwoods discontinued
- **February 2005** – First Retreat
- **November 2007** – Festival of Trees Program began
- **2007** – Quilt of Valor Program started
- **October 2009** – Accuquilt purchased
- **2010** – UCSF Gift Bags Program started
- **2012** – Holiday Luncheon moved from December to the following January

ANNOUNCEMENTS

- **April 2005 Newsletter – Calling All Quilt Groups!**
- Please print out a list of your meeting date, members, any openings, and new member policy. Please bring it to the next Guild meeting and leave it with either Lynne Atkins or Carol Tackett. This will help our new members to “find a home” in the quilting community.

- **June 2005 Newsletter – A Good Suggestion!**
- When sending email to the guild membership (ppqg@lists.mcn.org), it’s a good idea to include “PPQG” in your subject line. Not everyone recognizes the email addressees and might mistake a vitally important message as unwanted spam!

WHAT'S NEXT?

- 2016 will be the 20 year Anniversary of the Guild
- Let's do a grand, more complete presentation at that time
- Let's fill in the holes
 - Find pictures of events...especially those from 1996 to 2001
 - Any items I've missed

Thank You

- **For assisting in the birth of a guild and participating in it's nurturing and development!!!!!!**