

PACIFIC PIECEMAKERS QUILT GUILD

Bits & Pieces

www.pacificpiecemakers.org

October 2021

NEWSLETTER EDITOR: JUDY RIDDLE

PRESIDENT'S MESSAGE

First of all, I do want to congratulate Sandy Hughes and Francie Angwin for our great Challenge show. You really did us proud! They had a great crew to help out, especially with quilt take-in and hanging. Thank you ALL so much!

It appears that interest in the Guild is dissipating a bit, probably due to the fact we are not able to meet in person. With the New Year coming, and hopefully the ability to get together again, could you let me know what kinds of things you would be interested in seeing at our guild meetings? What would make you say, 'I don't want to miss THAT meeting!?' Not just program lecturers, but other activities that interest you, i.e. Block of the Month; free, quick and easy pattern ideas; take fabric from the fanny basket, tell us your idea of what you plan to do with it and bring back your finished project in 3 months, etc. Share your interests and ideas with me or any of the Guild officers.

We're still interested in offering a monthly (or more often) opportunity for a small group sewing experience. A number of our new members, as well as some who have been around for a while, have expressed an interest in just such gatherings. We could bring hand work to do or bring sewing machines to work on a project. We would have our get-togethers at a central location (so nobody has to worry about having to clean their house!) on a regular basis. Please let me know of this is an activity you might enjoy, and we can work out the details. What a great opportunity to get to know each other better!

I'm looking forward to seeing everyone at our November 19 meeting, at the Gualala Community Center at 12:30. Judy Riddle and Sandy Hughes will share their considerable expertise in finishing your quilt and how to make a sleeve to show it off!

~Janice Batchelder, Guild President

MARK YOUR CALENDARS

October 1 thru November 7 – Quilt Challenge Show
October 31-- Fundraiser Fun Turn In – tree ornament, Any item of your choice

November 8 –Pick-up your Artwork from Quilt Challenge

November 19 –Guild Meeting—social time at 12:30, mtg at 1:00 followed by Continuing Education presentation by Judy Riddle and Sandy Hughes

November 19 – Last call for Fundraiser Fun Turn In
Any item of your choice earns tickets

November 26 – Dec 31–Winter Wonderland

November 29 –deadline to RSVP for Holiday Lunch

December 8 – Holiday Luncheon

2022

February 7-10 – Guild Retreat in Healdsburg

May – Quilt Challenge

2021 PPQG Challenge Show Theme: Flying Free

What can I say! Our challenge has been a quilting success during a difficult time for public events. Several of the quilts have sold including one with a \$1200.00 price tag. Wow!

The quilts are being taken down as they are purchased so, if you have not been to the show, you might think about going before the walls are bare.

The quilts are wonderful. It is a bright and cheery show well worth going to see.

Thank you to everyone that contributed their time and skills to the success of our Silver Anniversary Challenge show. We appreciate everyone that entered a quilt or two or three or four.

The show was hung with the help of some very special volunteers too. Thank you to Darla & Bob Buechner, Della & Brian Zita, Judy Riddle, Mark Moulter, Marcia Luchini, Francie Angwin (co-chair) and Joe Pierce for coming ready to work. With their artful eyes, hammer-wielding, ladder climbing and measuring skills the show came together in one fun albeit busy afternoon. Their help was priceless and very much appreciated.

Also a special thank you to Harriet Wright for offering to donate her time as a non-quilter wherever she could be of help including hanging the artist cards and tending to refreshments at the reception on Saturday.

We had a very good time.

Pick-up Your Entry Monday, November 8, 11:00--1:00

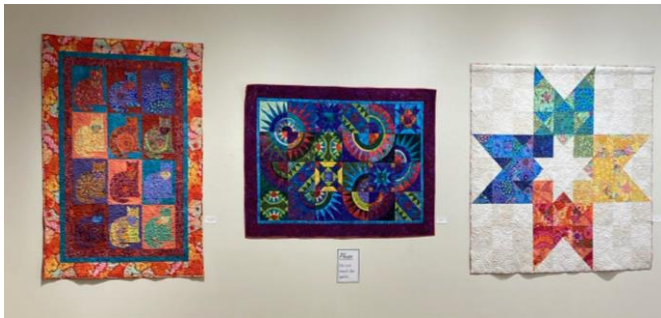
Pictures of Challenge Entries:



Quilts of Valor by Cheryl Faconti, Chris Smith, Darla Buechner and Francie Angwin



Della Zita, Gail Spencer, Jan Carter, Judy Riddle



Sandy Hughes, Carole Garcia, Sandy Hughes



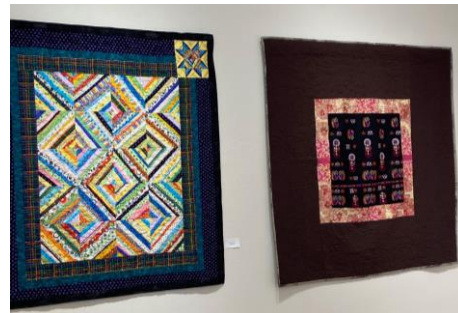
Jan Carter,
Barbara Fast,
Kathryn Gyorfi



Melissa Finley
Darla Buechner



Marcia Luchini, Jeri Kennedy, Jan Carter, Francie Angwin



Judy Riddle
Pam Todd



Sandy Hughes



Darla Buechner



Pam Todd
Barbara
Dunsmoor
Dee Goodrich
(top)
Barbara
Dunsmoor
(bottom)



Marcia Luchini



Iris Lorenz-Fife



Marcia Luchini



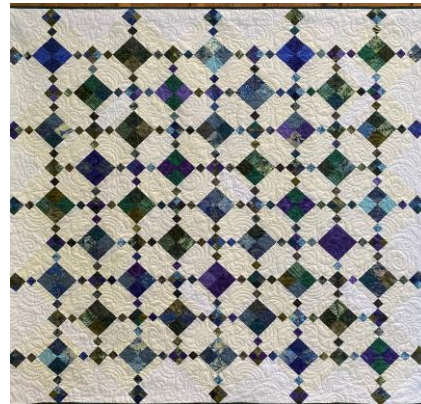
Chris Smith



Francie Angwin



Charlotte Teft



Judy Riddle



Barbara Fast

You need to see the quilts in person to truly appreciate the wonderful workmanship of our Guild!

~Sandy Hughes, Challenge Chair

PROGRAM 2021

November 19 – Continuing Education presentation by guild members Judy Riddle and Sandy Hughes. They will show different ways to prepare a sleeve for your quilt; a way to face, not bind, your quilt; ways to prepare a hang rod for your quilt.

“Program” Committee members are needed. We are looking for two or more members to come forward and work together to develop a program of workshops and lecturers for 2022 and beyond. With no committee, we will have no programs. Please contact President, Janice Batchelder if you are willing to help.



Mary Hunter



Sandy Hughes

FUNDRAISING FUN

2021 Fundraiser Turn in

We received 4 quilts at the September turn-in—



Two I-spy quilts from Dee Goodrich



From Marcia Luchini

I-Spy by Joyce Gaudet

October turn in will be October 31 from 12:00 -12:30 Gualala, parking lot between the Hotel and Gualala Market – Find Judy Riddle
It would be helpful if you would contact Judy to let her know you're coming.

Fundraising Fun Projects Schedule for 2021:

I think by now you've all got the idea of the Fundraising Fun, i.e. complete designated items, turn them in at the end of the month, tickets for your donation are put in a basket; a ticket will be drawn from the basket at the Holiday Luncheon and that person will receive a machine quilted quilt.

October – Christmas tree ornament

OR any item of your choice

November – Anything you wish to contribute

Note: The last turn-in day will be at the guild meeting on November 19!!!!

WINTER WONDERLAND

FUNDRAISING SALE

2021 Festival of Trees will again be Winter Wonderland. PPQG will have a sales booth to sell all of the wonderful items guild members have made during the past year. **Winter Wonderland sale will begin Friday, November 26 and continue through Friday, December 31.** All sales will go through GAC, thus no need for the guild to provide staffing for our booth during the entire sale. We may, however, be asked to provide docents part of the Thanksgiving Holiday Weekend. We encourage you to visit Winter Wonderland and bring your friends!

Since the Guild sales booth “set-up” is November 20, **it is imperative that you bring your final items to the guild meeting on November 19 so they can be catalogued and priced.** We will likely not be able to ADD items to our inventory after November 20.

Judy Riddle, Fundraising Chair

HOLIDAY LUNCH 2021

PPQG Holiday Lunch

Wednesday, December 8, 2021

11:30 AM

Gualala Community Center

The Guild will again have lunch prepared by Tanya Radtkey from Black Oak Catering. We plan to have a sit-down lunch. Please arrive by 11:30 for a photo opportunity and lunch will be served at 12:00. With the COVID restrictions at GAC, we will have the luncheon at the Gualala Community Center. The menu will be Vegetable Quiche, Green Salad, Dinner Roll and Chocolate Cake. We are preparing a gift for everyone and planning a game activity. You may or may not need to bring fat quarters. More details will follow!

The Guild will cover the cost of your lunch, however, monetary donations will be welcomed, RSVP is necessary to give us a headcount. **RSVP to judy.ann.riddle@gmail.com no later than Monday, November 29.** Be sure to “Mark your Calendar”

~ Judy Riddle and Sylvia Evans

MEMBERSHIP

It's that time of year again. I am accepting dues for 2022. Please mail your check made payable to PPQG (plus Angel gift if desired) to: Gail Spencer, PO Box 1489, Gualala, CA 95445-1489. California members pay \$40. Out of state members pay \$25. Your renewal is due by January 1, 2022. We need and appreciate everyone's support and participation.

Please welcome new member Jeri Kennedy.

Condolences to guild member, Lori Holmes, whose mother passed away on October 18, 2021. Cards may be sent to Lori at 21570 Noblecrest Ct, Red Bluff, CA 96080.

~Gail Spencer, Membership Chair

QUILT CHALLENGE 2022

“Fresh Beginnings: Healing our Earth”

As we slowly emerge from a global pandemic the 2022 Challenge theme is “Fresh Beginnings: Healing our Earth”. Your project will be a way of acknowledging the challenges we face as a people and to promote a collective healing through the art of quilting. Inspiration can come from anywhere or anything affecting the delicate balance of our culture and environment. There are no material requirements; however, using natural, sustainable materials or upcycling items that are no longer wanted or needed into a project are recommended and encouraged. We hope you are finding inspiration all around you and are beginning the creative process for your Quilt Challenge project.

2022 Challenge Rules

- 1) Make a quilt of your own design and/or pattern/color choice
- 2) Natural Fibers are recommended but not required
- 3) Repurposing/upcycling items that are no longer wanted or needed into a quilt giving those materials new life is encouraged
- 4) No maximum or minimum sizes
- 5) Piecing techniques are the designers' choice

Turn in Entry form by: April 29, 2022

Deliver Artwork: May 11, 2022

Opening Reception: May 13, 2022

Pick up Artwork: June 6, 2022

~Della Zita, Sylvia Evans

2022 Quilt Challenge Committee

Dee Goodrich receives ribbon at PIQF



“Sierspinski Triangle” won Best Hand Work ribbon in the Mid Century Modern competition at PIQF. A whole cloth art quilt, hand quilted with metallic thread. CONGRATULATIONS, Dee!!!

The Quilt Walkers of Panquitch, Utah

I bet you have never heard of The Quilt Walkers. On a recent trip to check out Bryce Canyon and Zion National Parks, I came across the story of the Quilt Walkers of Panquitch, Utah and their amazing survival in the winter of 1864-1865.

As the story goes in 1864 a group of Mormon pioneers came to Panquitch, Utah to settle near Bear Valley on the Spanish Trail. They planted crops but because winter came early that year, the crops did not mature. The families found themselves in a desperate situation facing starvation without any flour or supplies to sustain them through the winter. Seven men took off with wagons to try to get to the nearest town 40 miles away to get supplies. When the wagons became stuck in knee deep snow the men lay down a quilt to pray. While on their knees on the quilt the men realized that they hadn't sunk in the snow. They stood and walked across the quilt and began laying one across another. They trekked from one quilt to another across the mountain to Parowan, and then back with supplies to the abandoned wagons to save their families. This journey became known as The Panquitch Quilt Walk. The Quilt Walk is commemorated every year on the second week of June. There is a festival, quilt show, quilt classes and fair. A Quilt Walk Monument to these brave men is in the town park.



Enamored by reading this story online, my husband and I decided to stay in this adorable town for three nights as we visited Bryce Canyon and Zion National Parks. It is only ten miles to Bryce Canyon and sixty miles to Zion. We stayed at the lovely Panquitch House Bed and Breakfast. We enjoyed a comfortable room and a beautiful hot breakfast each morning for a mere \$110. Our host made box lunches each day for \$9 and we were able to enjoy the parks without the hassle of looking for a place for lunch. Of course, I did visit an awesome quilt store in town, Patches, which had 4,000 bolts of fabric and all the national parks panels with associated fabrics. If you decide to visit Bryce or Zion National Parks Panquitch is an interesting historical stop that any quilter may enjoy.

~Marcia Luchini